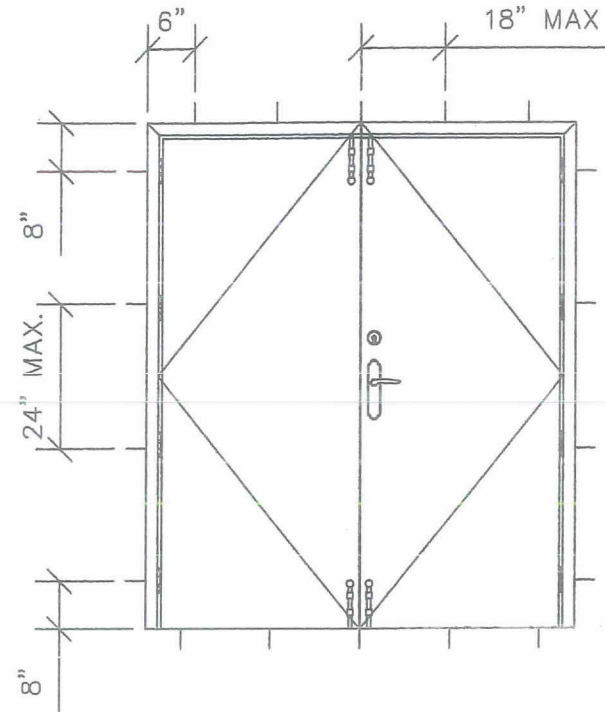


OUTSWING PAIR



ANCHOR LOCATIONS

ANCHOR SCHEDULE				
FASTENER TYPE	DESCRIPTION	BASE MATERIAL	EMBEDMENT (MIN)	EDGE DISTANCE (MIN)
A	#14 FLAT HEAD WOOD SCREW	WOOD	1 3/4"	1"
B	1/4" FLAT HEAD THREAD-FORMING SHEET METAL SCREW	STEEL	1/2"	1/2"
C	1/4" FLAT HEAD TAPCON CONCRETE SCREW	CONCRETE/CMU	1 1/2"	1 1/2"
D	WIRE ANCHOR	CMU	5"	1"
E	T-ANCHOR	CMU	5"	1"

ANCHOR NOTES:

- SEE SHEET 5 FOR ANCHOR DETAILS.
- SHIM AS REQUIRED AT EACH ANCHOR LOCATION USING LOAD BEARING SHIMS. SHIM WHERE SPACE GREATER THAN 1/16" IS PRESENT. MAX. SHIM STACK = 1/4"
- NO 33 1/3% ALLOWABLE STRESS INCREASE HAS BEEN USED IN THE DESIGN OF THIS SYSTEM. WIND LOAD DURATION FACTOR Cd=1.6 HAS BEEN USED FOR WOOD DESIGN.
- ANCHORS SHALL BE INSTALLED PER MANUFACTURER'S SPECIFICATONS, SPACED AS NOTED HEREIN. ANCHOR EMBEDMENT TO BASE MATERIAL DOES NOT INCLUDE WALL DRESSING OR STUCCO.

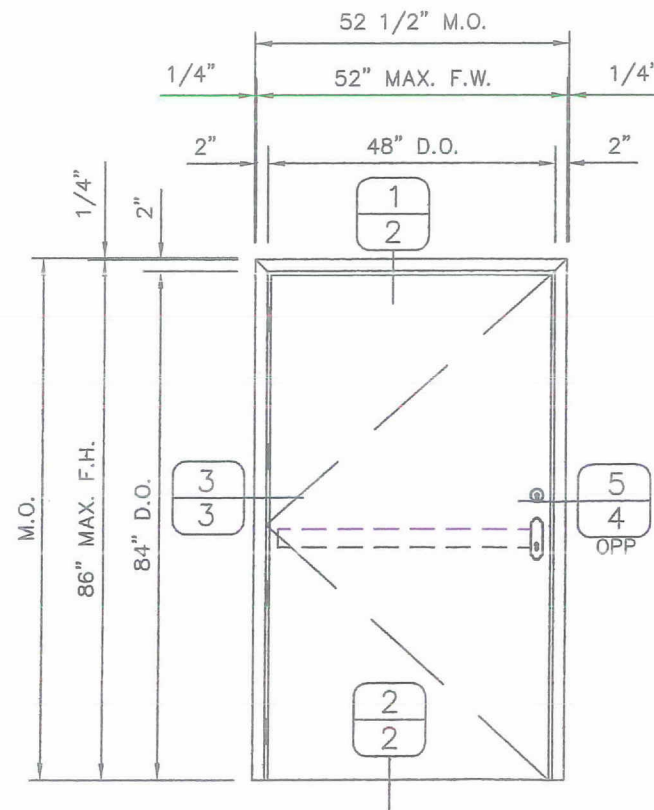
DESIGN PRESSURE  
+/-70 PSF

**CORGUARD "PLUS" SERIES FIBERGLASS DOOR**

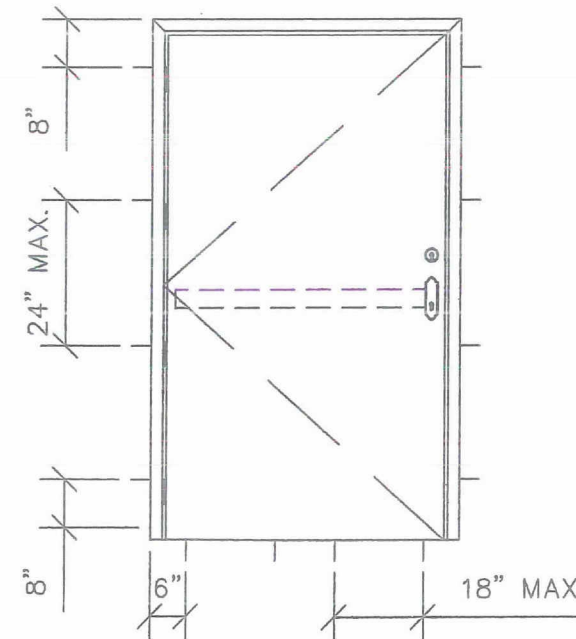
IMPACT RESISTANT OUTSWING SINGLES AND PAIRS  
(SHUTTERS ARE NOT REQUIRED)

GENERAL NOTES:

- THE PRODUCT SHOWN HEREIN IS DESIGNED AND MANUFACTURED TO COMPLY WITH ALL THE REQUIREMENTS OF THE CURRENT EDITION OF THE FLORIDA BUILDING CODE FOR USE OUTSIDE OF THE HVHZ.
- SEE THE FASTENER SCHEDULE ON THIS SHEET AND DETAILS ON SHEET 5 FOR FASTENER INFORMATION
- SHIM AS REQUIRED AT EACH PERIMETER ANCHOR WITH LOAD BEARING SHIM. SHIM AREAS WITH GAP WIDTHS OF 1/16" OR GREATER. MAXIMUM SHIM GAP = 1/4".
- USE STRUCTURAL SILICONE FOR PERIMETER SEAL.
- ALL EXTRUSIONS ARE MADE FROM FRP EXCEPT WHERE OTHERWISE NOTED.
- SEAL HEAD, SILL, AND JAMB CORNERS WITH STRUCTURAL SILICONE SEALANT.



OUTSWING SINGLE



ANCHOR LOCATIONS

FOR FBC USE ONLY.



REVISIONS:

SCALE: 3/8" = 1"0"

DRAWN BY: MAR

DATE: 7-1-09

**CORGUARD**

CORROSION GUARD PRODUCTS  
470 N. CLAYTON ST., SUITE 201  
LAWRENCEVILLE, GA. 30045

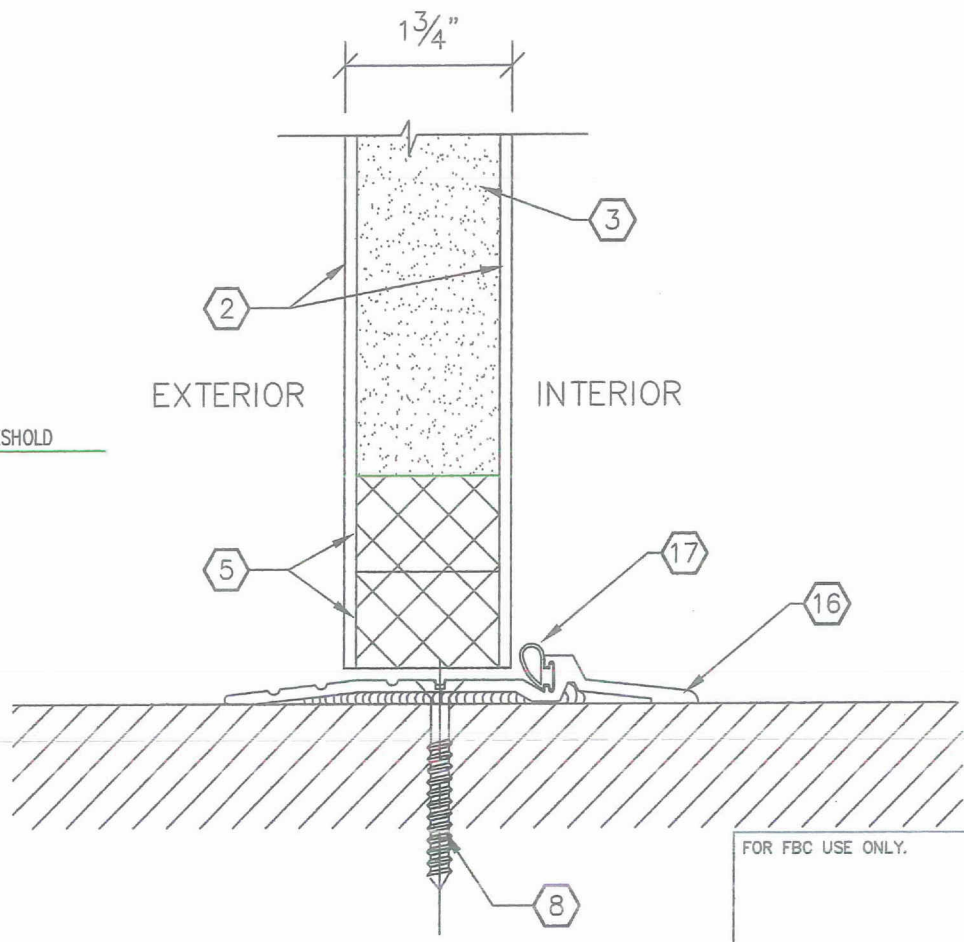
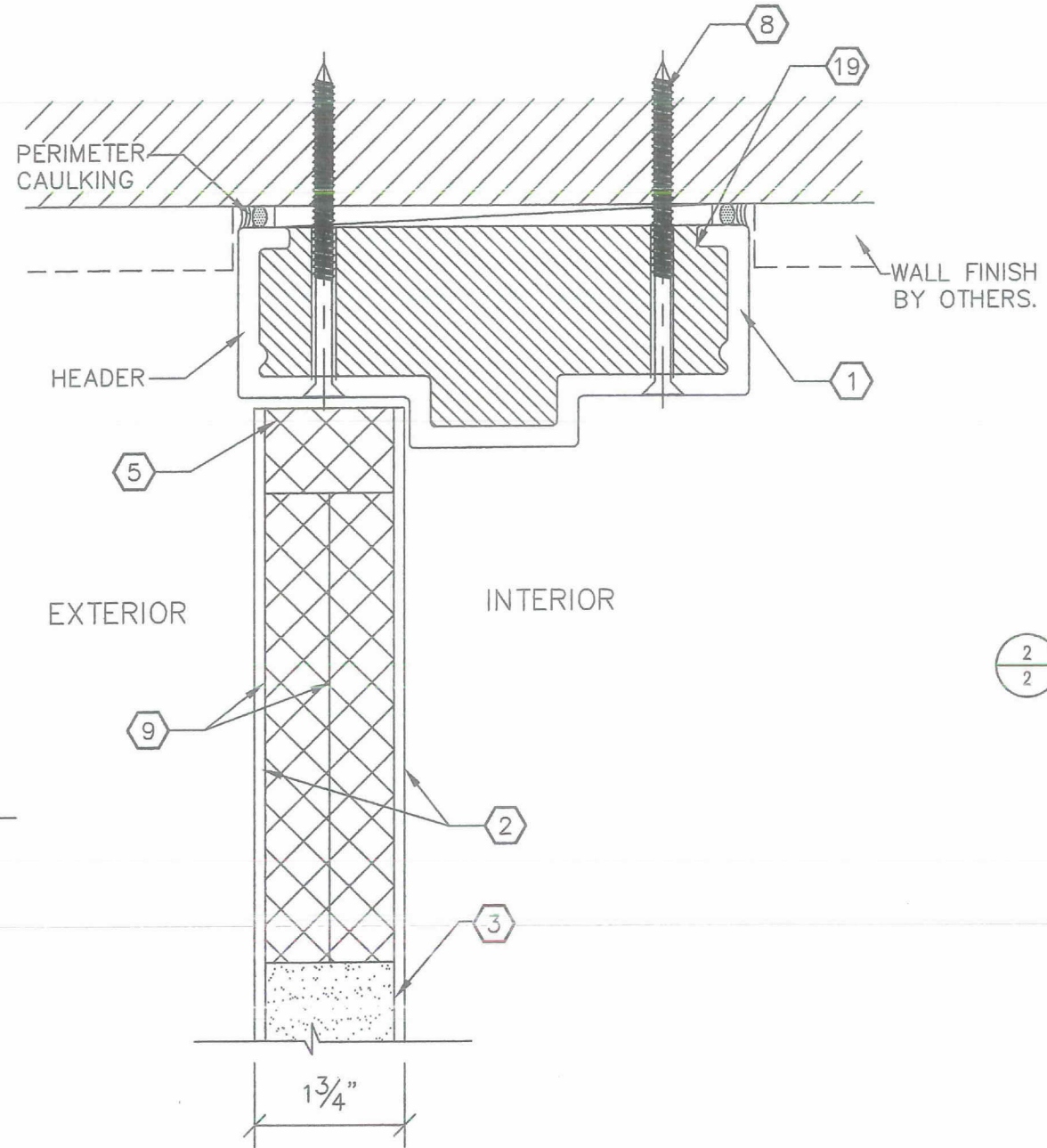
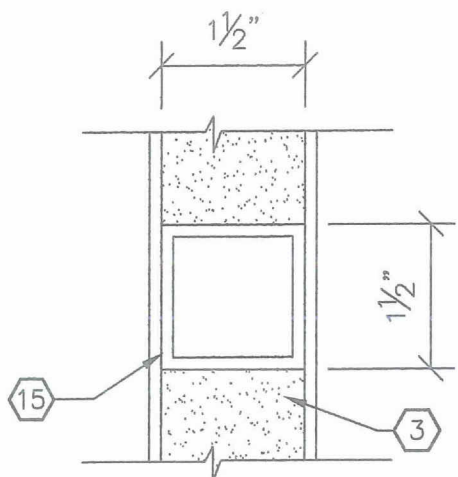
PH: (770) 513-0047  
FAX: (770) 882-9705  
WWW.COR-GAURD.COM

DRAWING TITLE:  
CORGUARD PLUS SERIES  
FLPA SUBMITTAL

DWG. #  
ELEVATIONS

PAGE NO.  
1/6

SEE SHEET 5 FOR  
FASTENER TYPE  
AND LOCATION



FOR FBC USE ONLY.



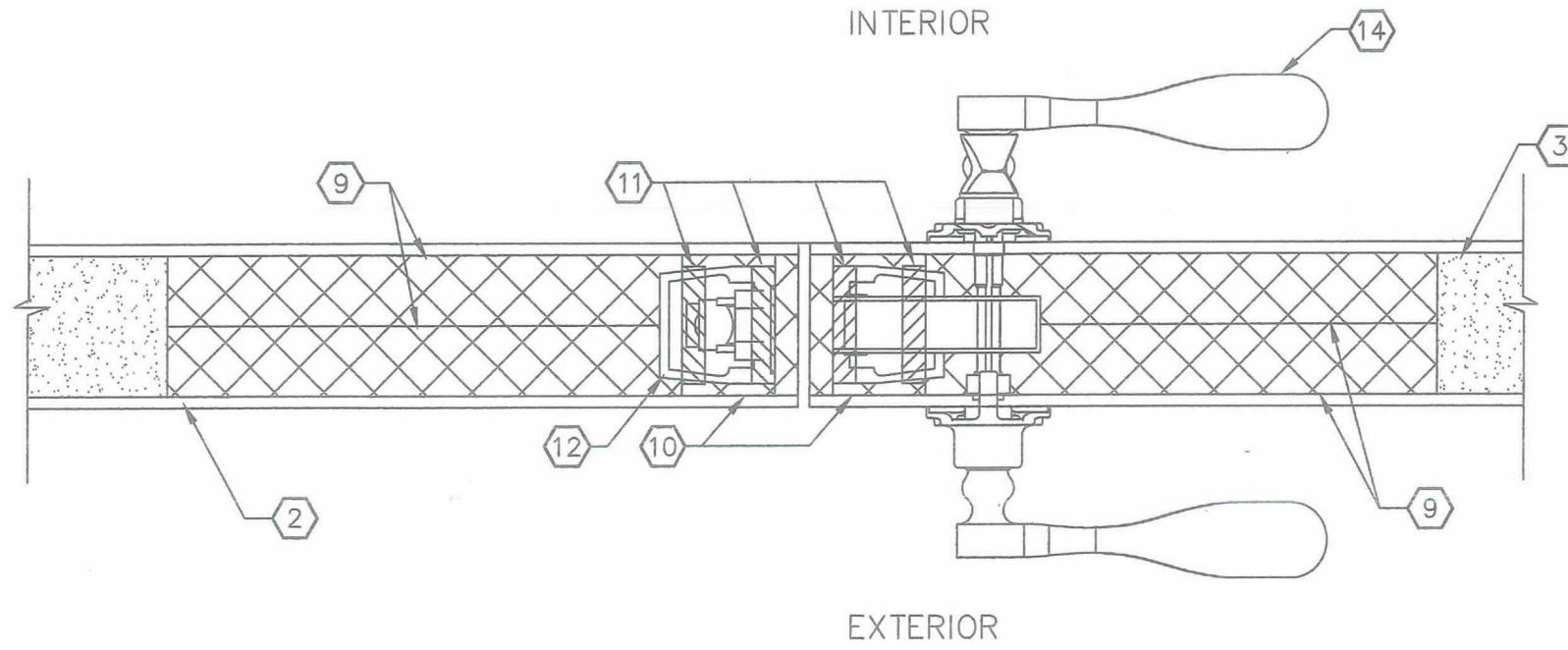
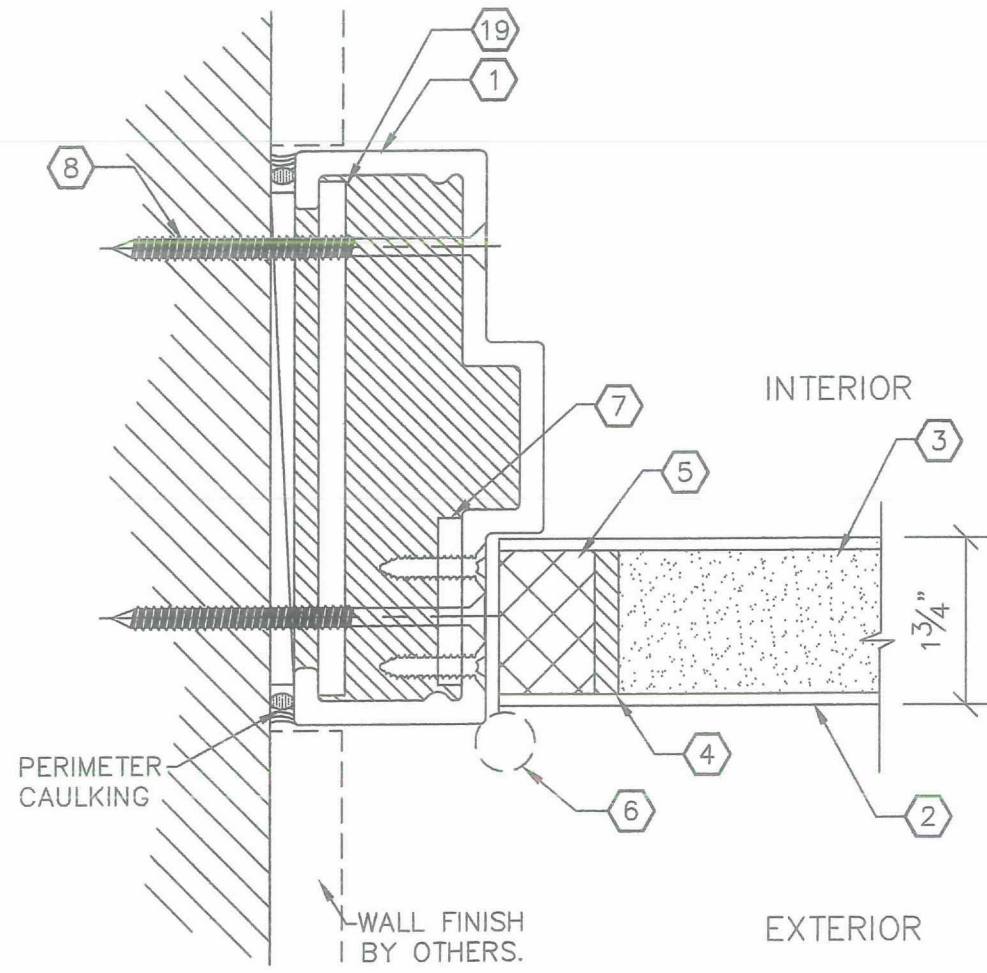
REVISIONS:	△	△	△
SCALE:	6" = 1"0"		
DRAWN BY:	MAR		
DATE:	7-1-09		

**CORGUARD**

CORROSION GUARD PRODUCTS  
470 N. CLAYTON ST, SUITE 201  
LAWRENCEVILLE, GA 30045

PH: (770) 513-0047  
FAX: (770) 682-9705  
WWW.COR-GUARD.COM

DRAWING TITLE:	CORGUARD PLUS SERIES FLPA SUBMITTAL
DWG. #	DETAILS
PAGE TITLE:	PAGE NO. 2/6



3 HINGE JAMB  
3

4 MEETING STYLES  
3

FOR FBC USE ONLY.



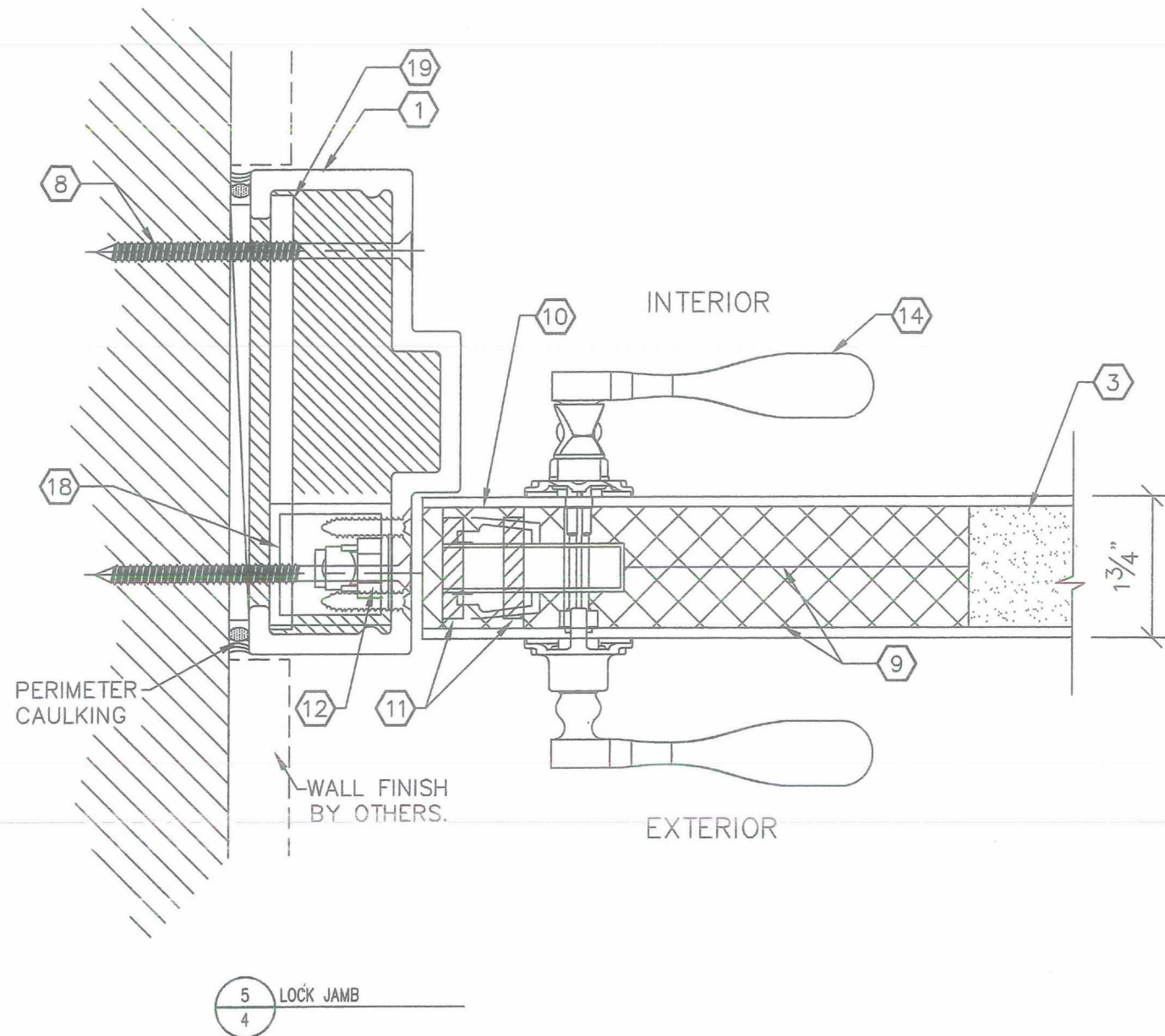
REVISIONS:	△	△	△
SCALE:	6" = 1" 0"		
DRAWN BY:	MAR		
DATE:	7-1-09		

**CORGUARD**

CORROSION GUARD PRODUCTS  
470 N. CLAYTON ST., SUITE 201  
LAWRENCEVILLE, GA 30045

PH: (770) 513-0047  
FAX: (770) 682-9705  
WWW.COR-GAURD.COM

DRAWING TITLE: CORGUARD PLUS SERIES FLPA SUBMITTAL	DWG. # DETAILS	PAGE NO. 3/6
--	-------------------	-----------------



HARDWARE SCHEDULE			
PART #	DESCRIPTION	MATERIAL	MANUFACTURER
6	HINGE	SS	HAGER
7	HINGE BACKER PLATE	FRP	COR-GUARD
12	LOCK STRIKE	SS	HAGER
16	THRESHOLD	ALUMINUM	HAGER
17	THRESHOLD WEATHERSTRIP		HAGER
	CLOSER (OPTIONAL)		
LOCK OPTIONS:			
SINGLE			
	RIM EXIT AND DEADLOCK		HAGER
14	MORTISE LOCK AND DEADLOCK		HAGER
14	CYLINDRICAL LEVERLOCK AND DEADLOCK		HAGER
PAIR			
14	CYLINDRICAL DEADLOCK AND DEADLOCK		HAGER
20	SURFACE BOLTS	SS	HAGER

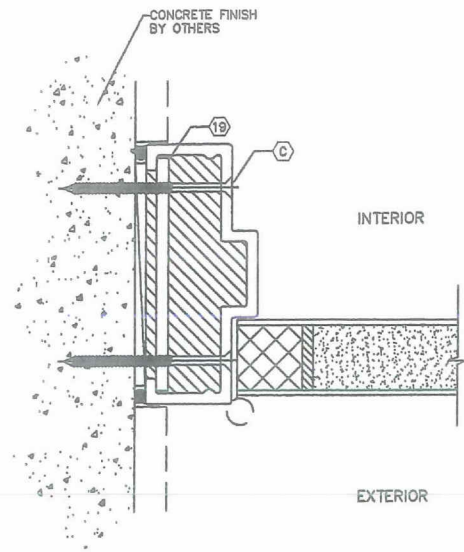
FOR FBC USE ONLY.



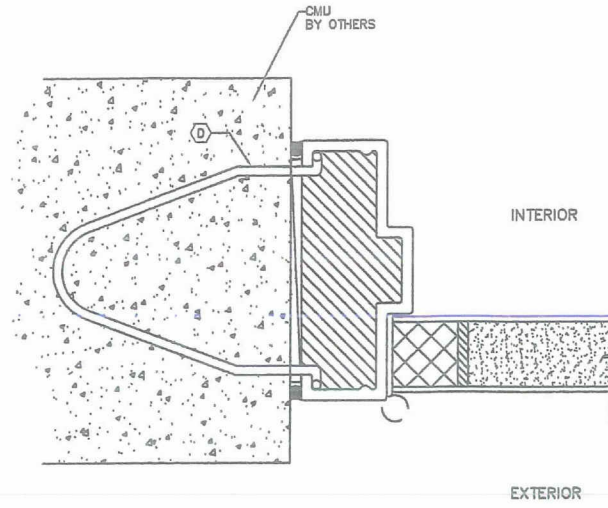
REVISIONS:	△	△	△
SCALE:	6" = 1" 0"		
DRAWN BY:	MAR		
DATE:	7-1-09		

**CORGUARD**  
 CORROSION GUARD PRODUCTS  
 470 N. CLAYTON ST., SUITE 201  
 LAWRENCEVILLE, GA 30045  
 PH: (770) 513-0047  
 FAX: (770) 682-9705  
 WWW.COR-GUARD.COM

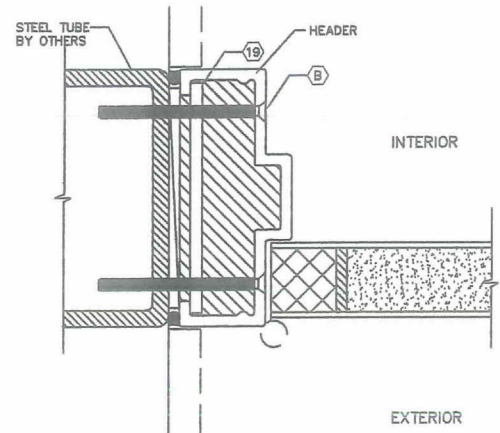
DRAWING TITLE:	CORGUARD PLUS SERIES FLPA SUBMITTAL
DWG. #	DETAILS
PAGE TITLE:	PAGE NO. 4/6



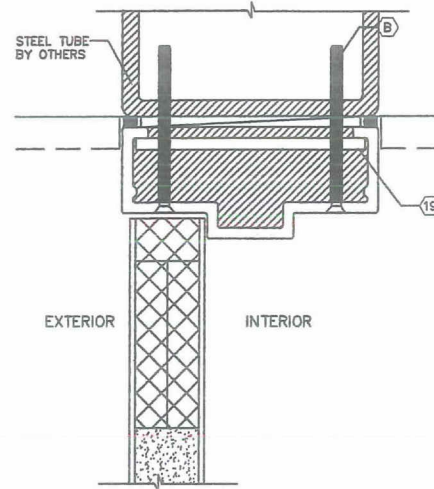
JAMB DETAIL (CONCRETE)



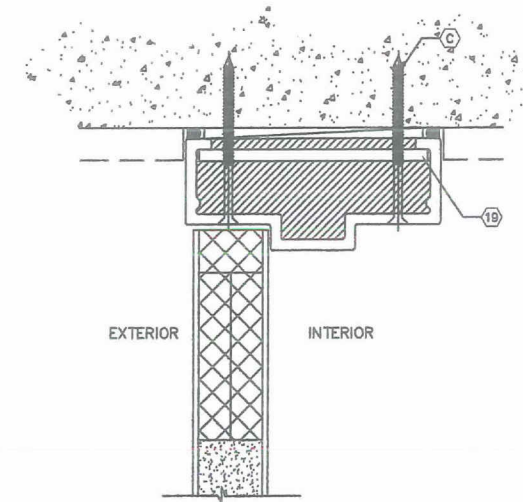
JAMB DETAIL (CMU)



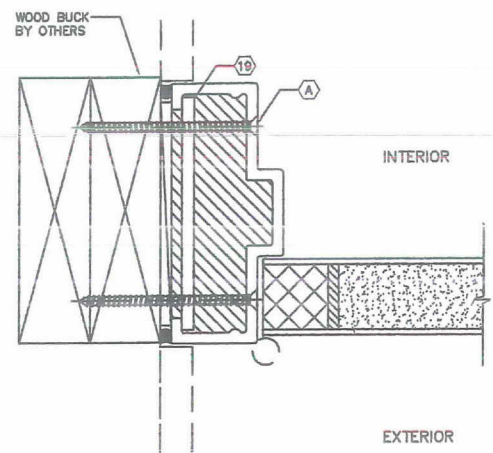
JAMB DETAIL (STEEL)



HEAD DETAIL (PAIRS ONLY)  
(STEEL - WOOD SIMILAR)



HEAD DETAIL (PAIRS ONLY)  
(CONCRETE / CMU)



JAMB DETAIL (WOOD)

FOR FBC USE ONLY.



ENGINEER:	SCOTT WALTERS FL PER 62354						
REVISIONS:	<table border="1"> <tr> <td>1</td> <td>△</td> </tr> <tr> <td>2</td> <td>△</td> </tr> <tr> <td>3</td> <td>△</td> </tr> </table>	1	△	2	△	3	△
1	△						
2	△						
3	△						
SCALE:	N.T.S.						
DRAWN BY:	MAR						
DATE:	7-1-09						

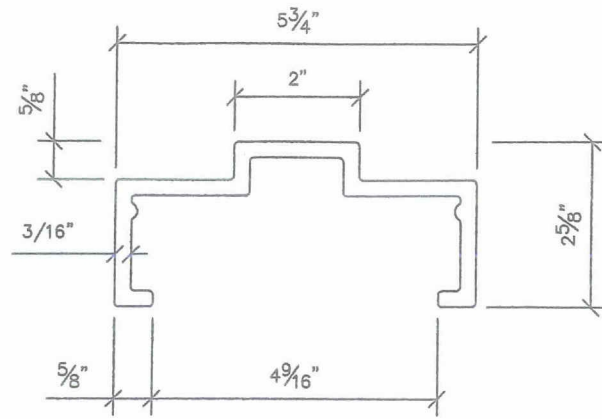
**CORGUARD**

PH: (770) 513-0047  
FAX: (770) 682-9705  
WWW.COR-GAURD.COM

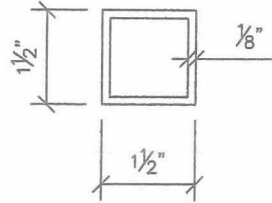
CORROSION GUARD PRODUCTS  
470 N. CLAYTON ST., SUITE 201  
LAWRENCEVILLE, GA 30045

DRAWING TITLE:	CORGUARD PLUS SERIES FLPA SUBMITTAL
DWG. #	DETAILS
PAGE TITLE:	PAGE NO. 5/6

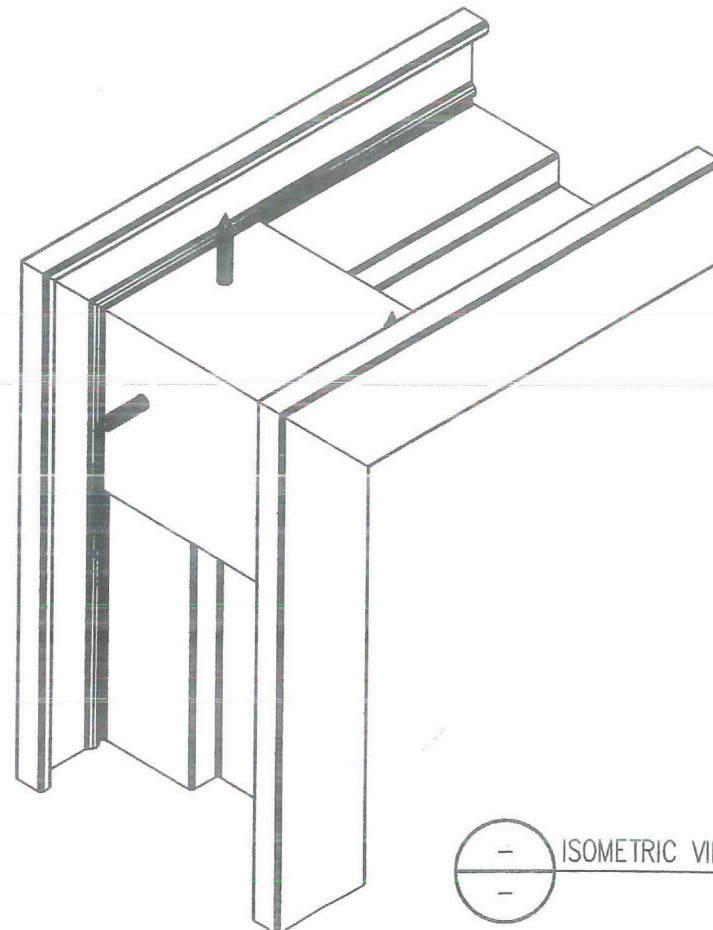
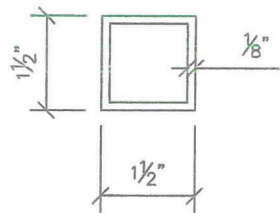
1



15



18



ISOMETRIC VIEW

### BILL OF MATERIALS

PART #	DESCRIPTION	MATERIAL	MANUFACTURER
1	DOOR FRAME	FRP	COR-GUARD
2	DOOR SKIN	FRP	COR-GUARD
3	CORE MATERIAL	STYRENE	COR-GUARD
4	FRP BACKER	FRP	COR-GUARD
5	LOCK STILE	ABS	COR-GUARD
6	HINGE	S.S.	HAGER
7	HINGE BACKER PLATE	FRP	COR-GUARD
8	PERIMETER FASTENER	S.S.	CONST. FASTENERS
9	LOCK REINFORCEMENT	ABS	COR-GUARD
10	HINGE STILE	ABS	COR-GUARD
11	FRP REINFORCEMENT	FRP	COR-GUARD
12	LOCK STRIKE	S.S.	HAGER
14	LOCK	S.S.	HAGER
15	MID-RAIL	FRP	COR-GUARD
16	THRESHOLD	ALUMINUM	HAGER
17	WEATHERSTRIP	NEOPRENE	HAGER
18	JAMB STRIKE REINFORCEMENT	FRP	COR-GUARD
19	EMA ANCHOR PLATE	FRP	COR-GUARD

FOR FBC USE ONLY.



ENGINEER:	SCOTT WALTERS No. 62354		
REVISIONS:	△	△	△
SCALE:	N.T.S.	DRAWN BY:	MAR
		DATE:	7-1-09

**CORGUARD**  
 CORROSION GUARD PRODUCTS  
 470 N. CLAYTON ST, SUITE 201  
 LAWRENCEVILLE, GA 30045  
 PH: (770) 513-0047  
 FAX: (770) 682-9705  
 WWW.COR-GAURD.COM

DRAWING TITLE:	CORGUARD PLUS SERIES FLPA SUBMITTAL
DWG. #	DETAILS
PAGE TITLE:	PAGE NO. 6/6