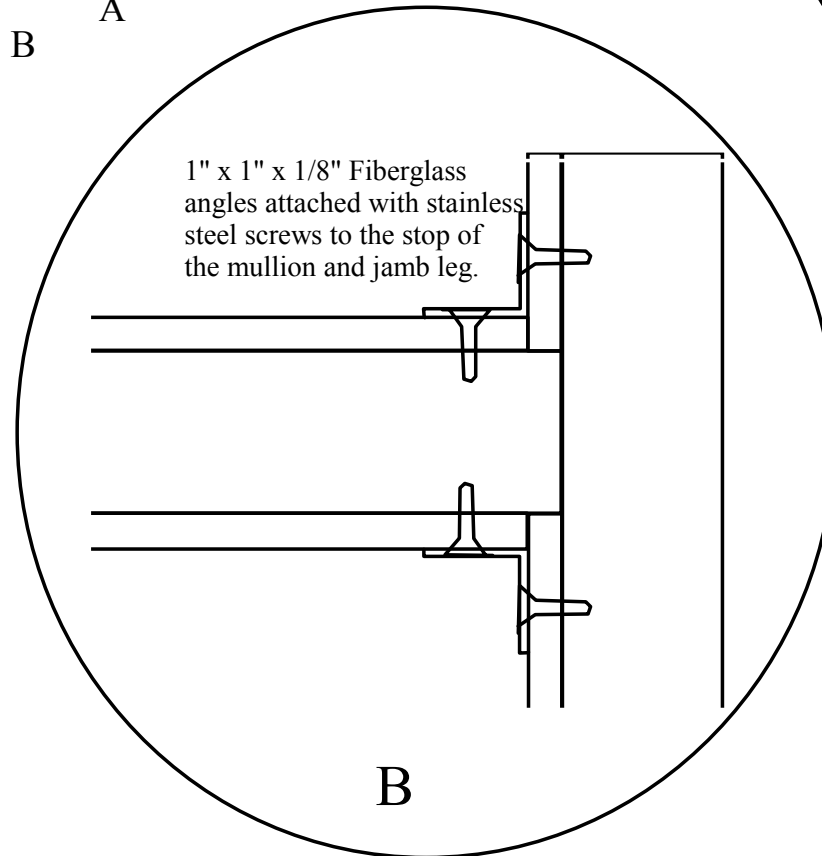
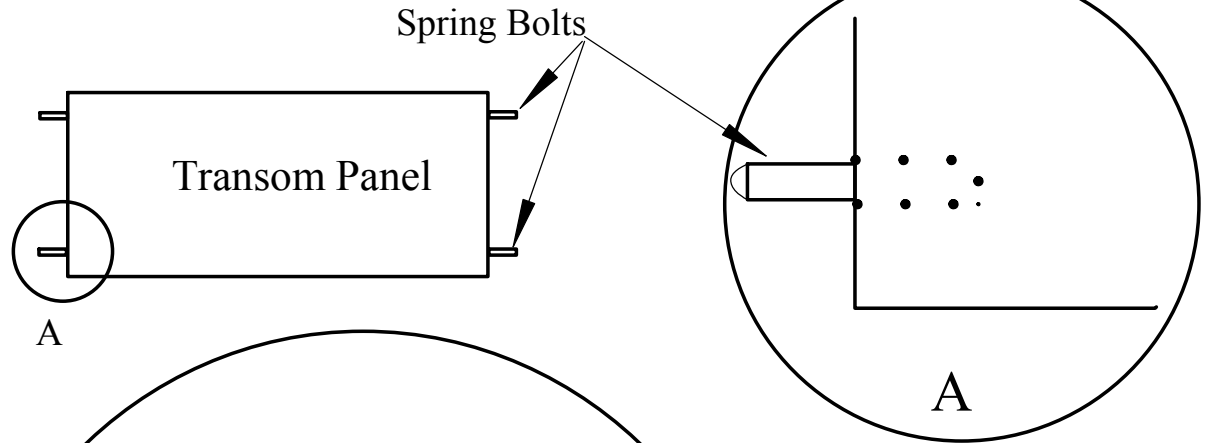


## Assembly

- 1 Place fiberglass angles on the face of stop at both ends of the transom bar 1/32" short of the notch in the transom bar.
- 2 Drill appropriate size pilot hole for mounting screws provided using the countersunk holes in the 1" angles as a guide.
- 3 Attach angles to the transom bar with provided screws.
4. Assemble frame per frame assembly instructions.
5. With assembled frame laying flat insert transom bar in desired location then mark and drill pilot holes in jamb legs.
6. Secure transom bar to the Jamb legs with provided screws.
7. If transom panel is being used insert provided spring bolts into pre drilled holes on transom panel.

B



Removable Transom Bar Detail

## Panel Installation

- 1 Once frame and transom bar are fully assembled and still laying flat on floor lay the transom panel into panel opening with pins extended.
2. Align the panel so margins are equal and use pins to mark location for holes in the frame.
3. Drill appropriate size hole in frame for the spring bolts.
4. Install frame in wall.
5. compress spring bolts and install transom panel in frame.

Oshkosh Door Company reserves the right to change design and / or details of its products without notice

**OSHKOSH**  
Door Company

**C-or-Guard** PRODUCT LINE

FOR MORE INFORMATION  
CALL 920-233-6161  
OR VISIT US AT  
oshkoshdoor.com

Removable Transom Bar  
and Panel Installation Detail

**DD203**

1/2017 SHEET Of