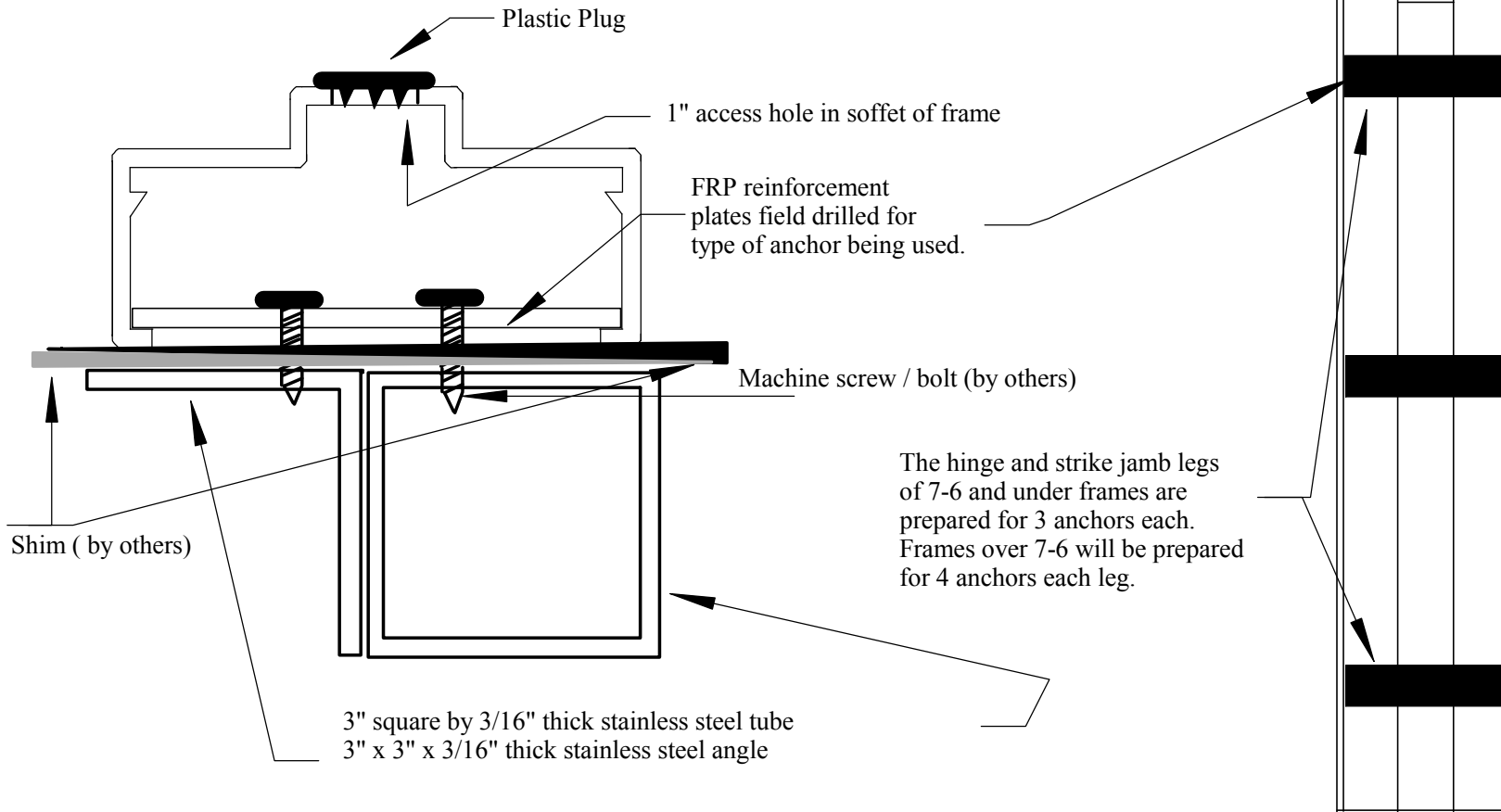


Drill two holes in each FRP reinforcement plate in the back of the frame. Position and plumb frame in the opening, mark the location of the holes in the reinforcement plates on the steel structure. Drill and tap the steel structure for the machine screws / bolts being used. Use tapered shims between back of FRP frame and stainless steel structure with one set located directly above each pair of machine screws / bolts and one set located directly below each pair of machine screws / bolts. Plumb and secure hinge side first and then use the shims on the strike side to adjust frame to proper width. Once door frame is securely bolted into place cut shims off flush with frame face and caulk entire perimeter of frame inside and out.



Oshkosh Door Company reserves the right to change design and / or details of its products without notice